



£210,000

Nestled in the desirable area of Wrose, High Ash in Shipley, this charming semi detached presents an excellent opportunity for families and professionals alike. Boasting three generously sized bedrooms, this property offers ample space for comfortable living. The dining room extension enhances the home's appeal, providing a perfect setting for family meals and entertaining guests.

The accommodation comprises briefly: Entrance hall, lounge, dining room, kitchen, three bedrooms and house bathroom. Gardens front and rear. Driveway to garage.

Conveniently located, this townhouse is within easy reach of both Shipley and Bradford, making it ideal for those who commute or enjoy the vibrant amenities these towns have to offer. The surrounding area is well-regarded, ensuring a pleasant environment for residents.

In addition to its spacious interior, the property features a drive, garage, and well-maintained gardens, providing both practicality and outdoor enjoyment. Whether you are looking to relax in the garden or utilise the garage for storage, this home caters to a variety of needs.

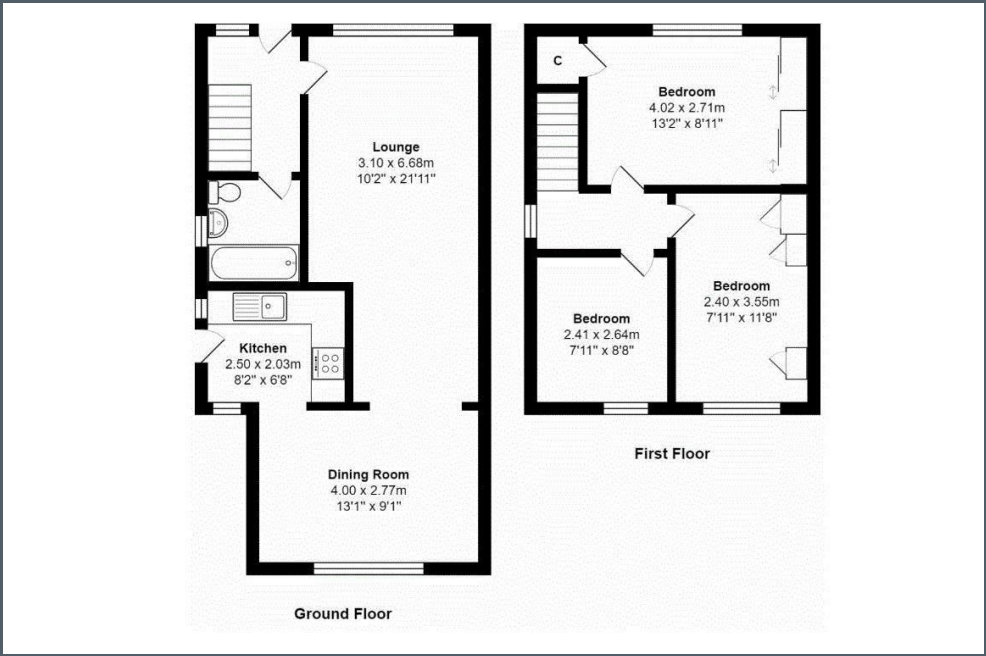
Ask us about....

AUCTION

CONVEYANCING

MORTGAGES

SURVEYS



These particulars do not form part of any contract and no statements are made without any responsibility on the part of their clients. Applicants must investigate for themselves that statements are correct and no agent whether the partner or employee has the authority to make any representation or warranty whatsoever in respect of this property.

IMPORTANT NOTICE: WHILST WE ENDEAVOUR TO MAKE OUR SALES DETAILS ACCURATE AND RELIABLE, THEY SHOULD NOT BE RELIED ON AS STATEMENTS OR REPRESENTATIONS OF FACT AND DO NOT IN ANY WAY CONSTITUTE A CONTRACT.

PROSPECTIVE PURCHASERS SHOULD SATISFY THEMSELVES THAT DIMENSIONS ARE CORRECT AND THAT MAINS SERVICES ARE OPERATIONAL.

